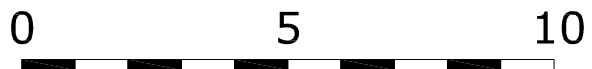
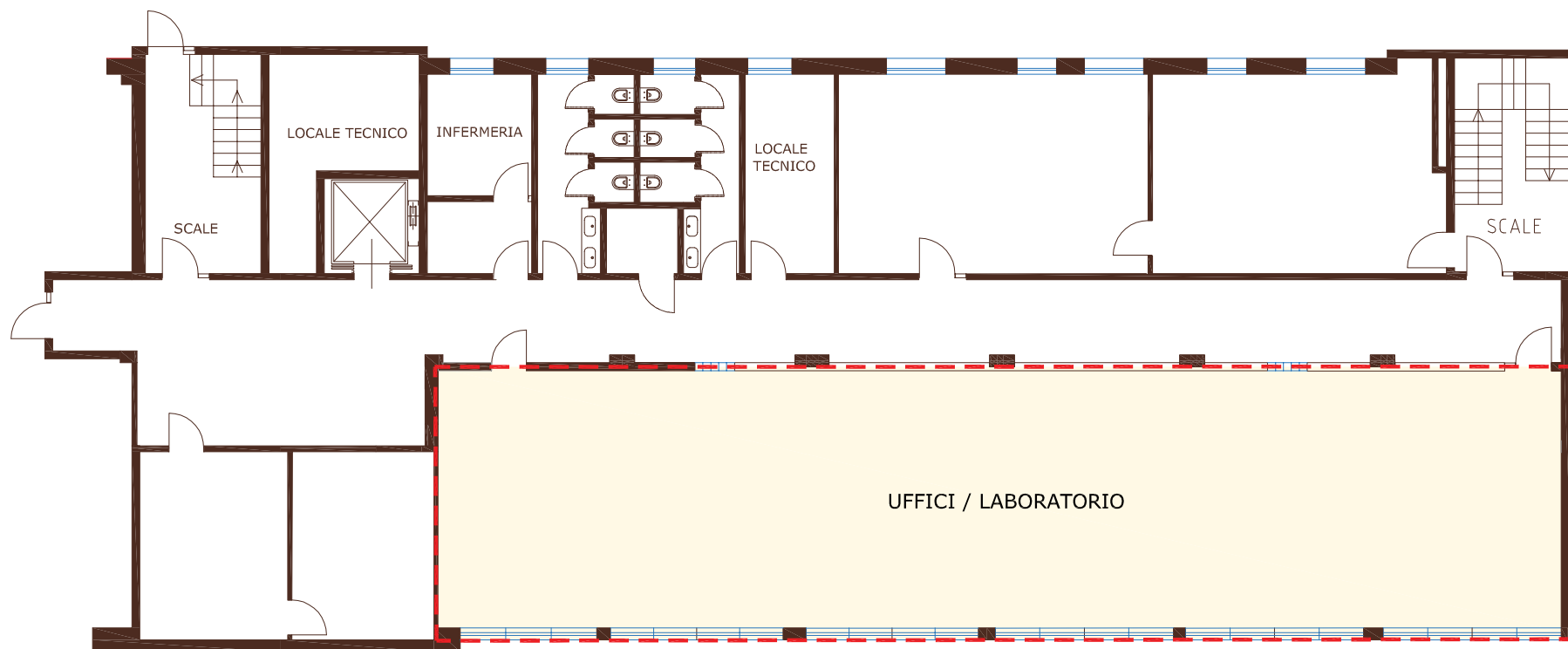
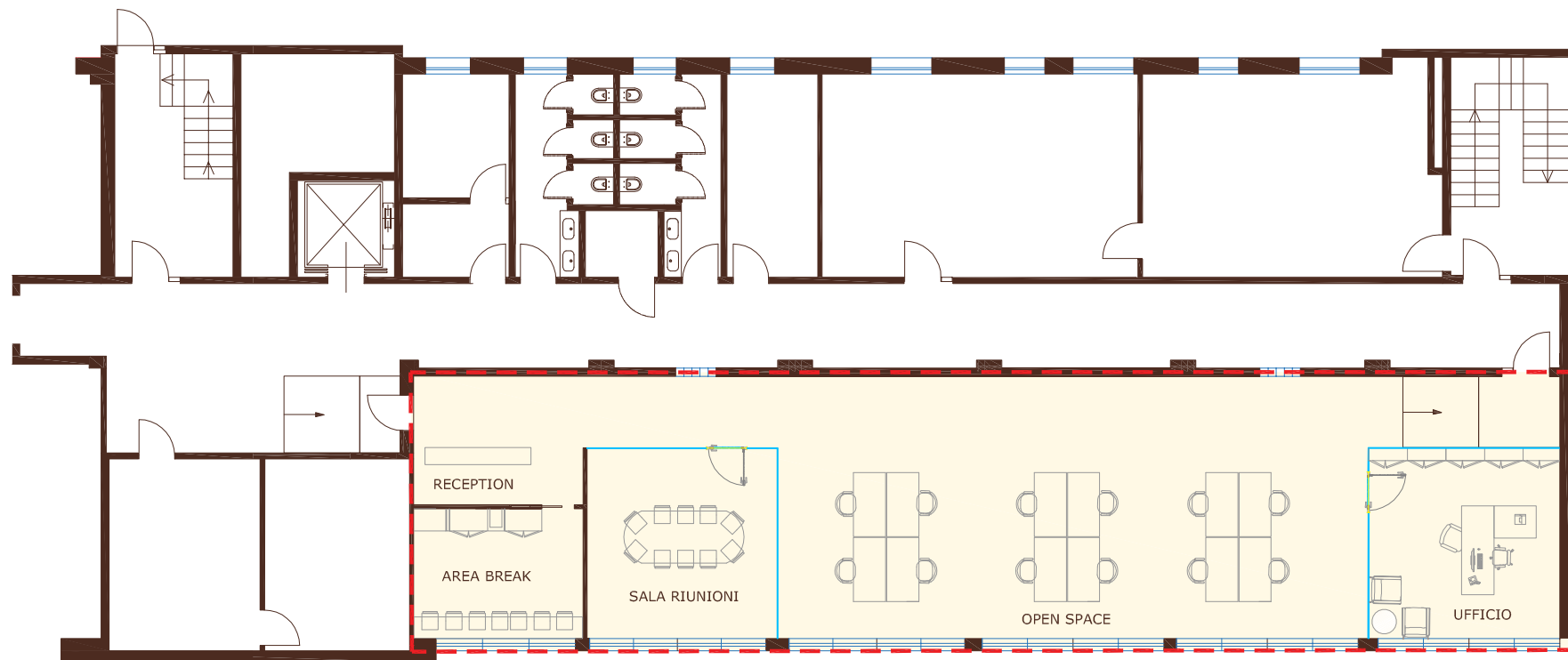


STATO DI FATTO



Via Manara 2 - Limbiate	
SUPERFICIE COMMERCIALE	200 MQ
DESTINAZIONE	UFFICI
H INTERNA	3,00 MT
PIANO	SEMINTERRATO

IPOSTESI DI PROGETTO



Via Manara 2 - Limbiate	
SUPERFICIE COMMERCIALE	200 MQ
DESTINAZIONE	UFFICI
H INTERNA	3,00 MT
PIANO	SEMINTERRATO